

# Thailand National Single Window

ASEAN Single Window



Information and Communication Technology Bureau , Thai Customs Department

11 May 2016



# Outline of the Presentation



- **Single Window Background**
- **National Single Window**
- **ASEAN Single Window**



# Single Window Background



# What is Single Window?

## UN/CEFACT Recommendation No. 33

- “A facility that allows party involved in trade and transport to lodge **standardized information and documents** with a **single entry** point to fulfill all import, export, and transit-related regulatory requirements. If information is **electronic**, then individual data elements should only be **submitted once**.”

## WCO World Customs Organization

- A Single Window Environment is a cross border, ‘intelligent’, facility that allows parties involved in trade and transport to lodge **standardized information**, mainly **electronic**, with a **single entry** point to fulfill all import, export and transit related regulatory requirements.

## ASW ASEAN Agreement to Establish ASW

- National Single Window is a system which enables the **Single submission**, single processing and single decision making for customs release and clearance



# ASEAN Community : 2015

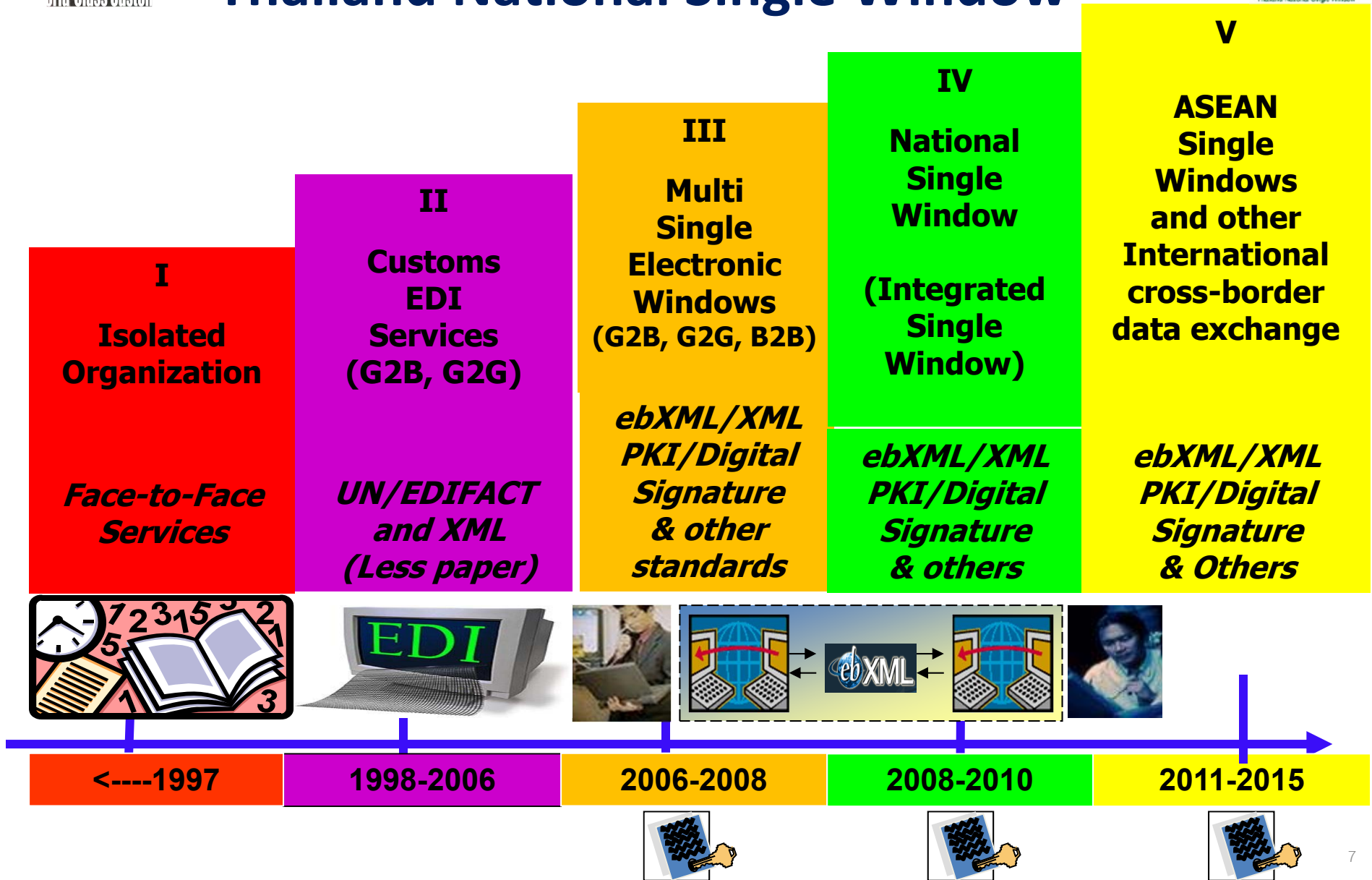




# National Single Window



# The evolution of Thailand National Single Window





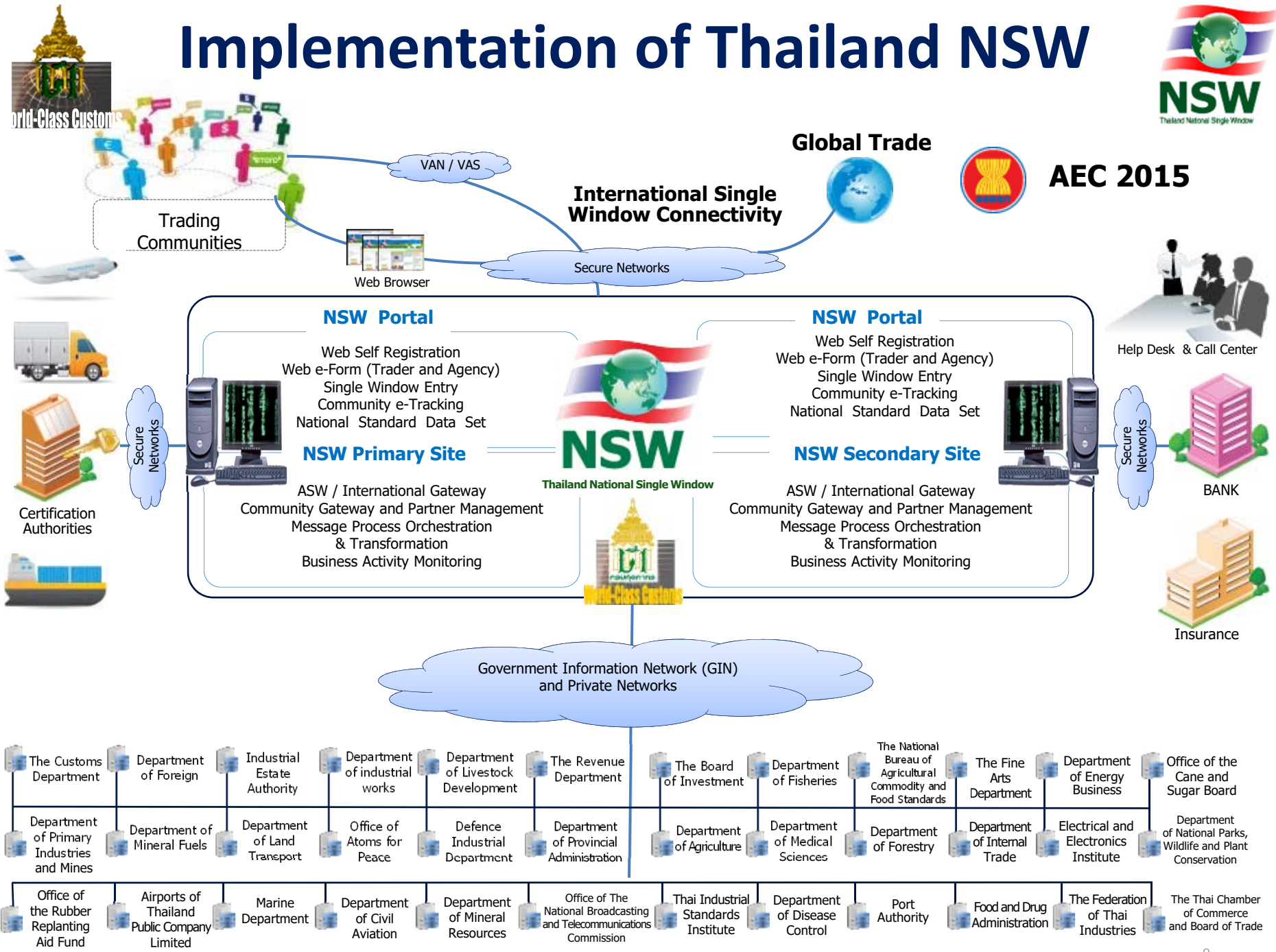
# Implementation of Thailand NSW



Global Trade



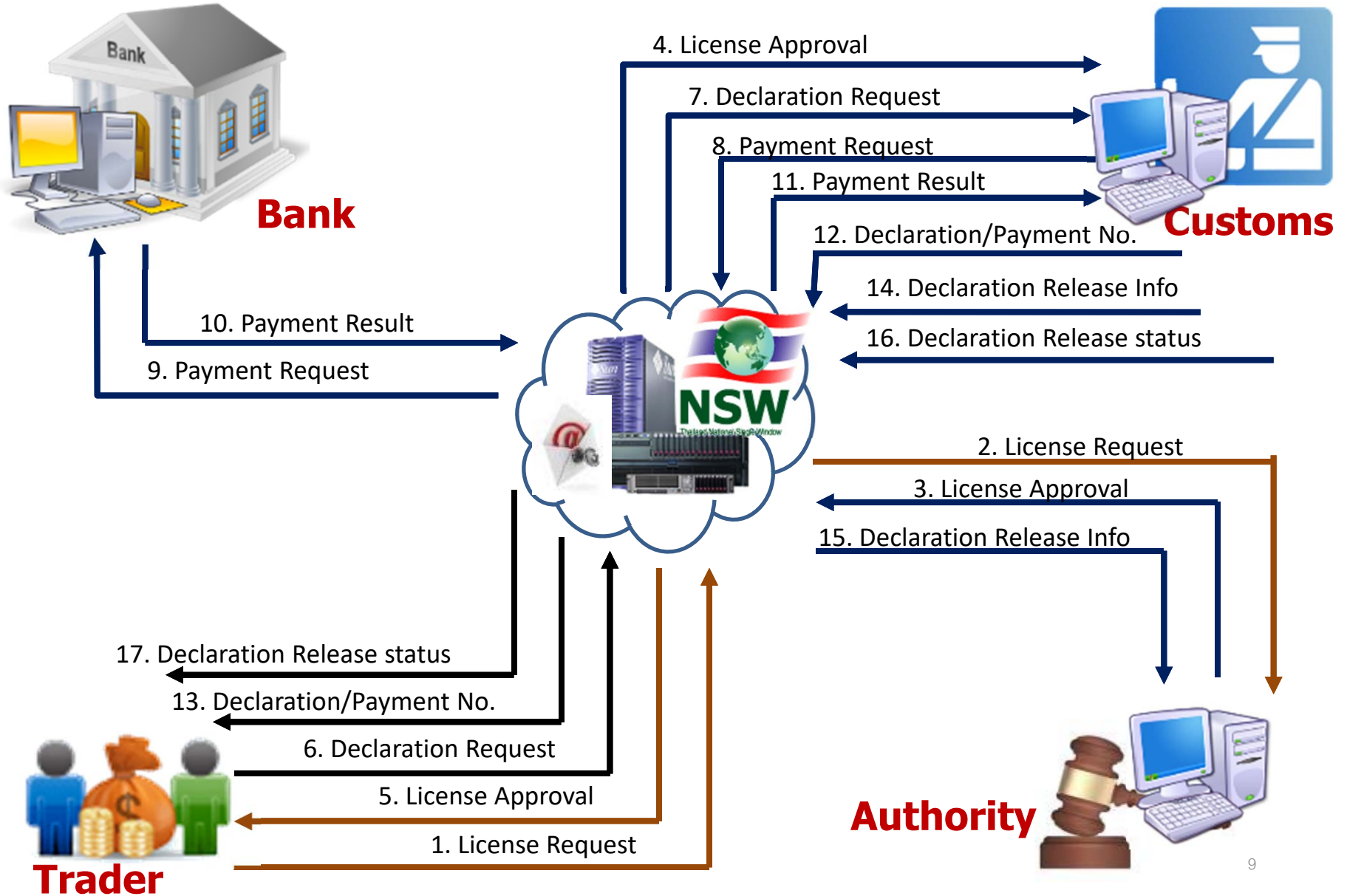
AEC 2015





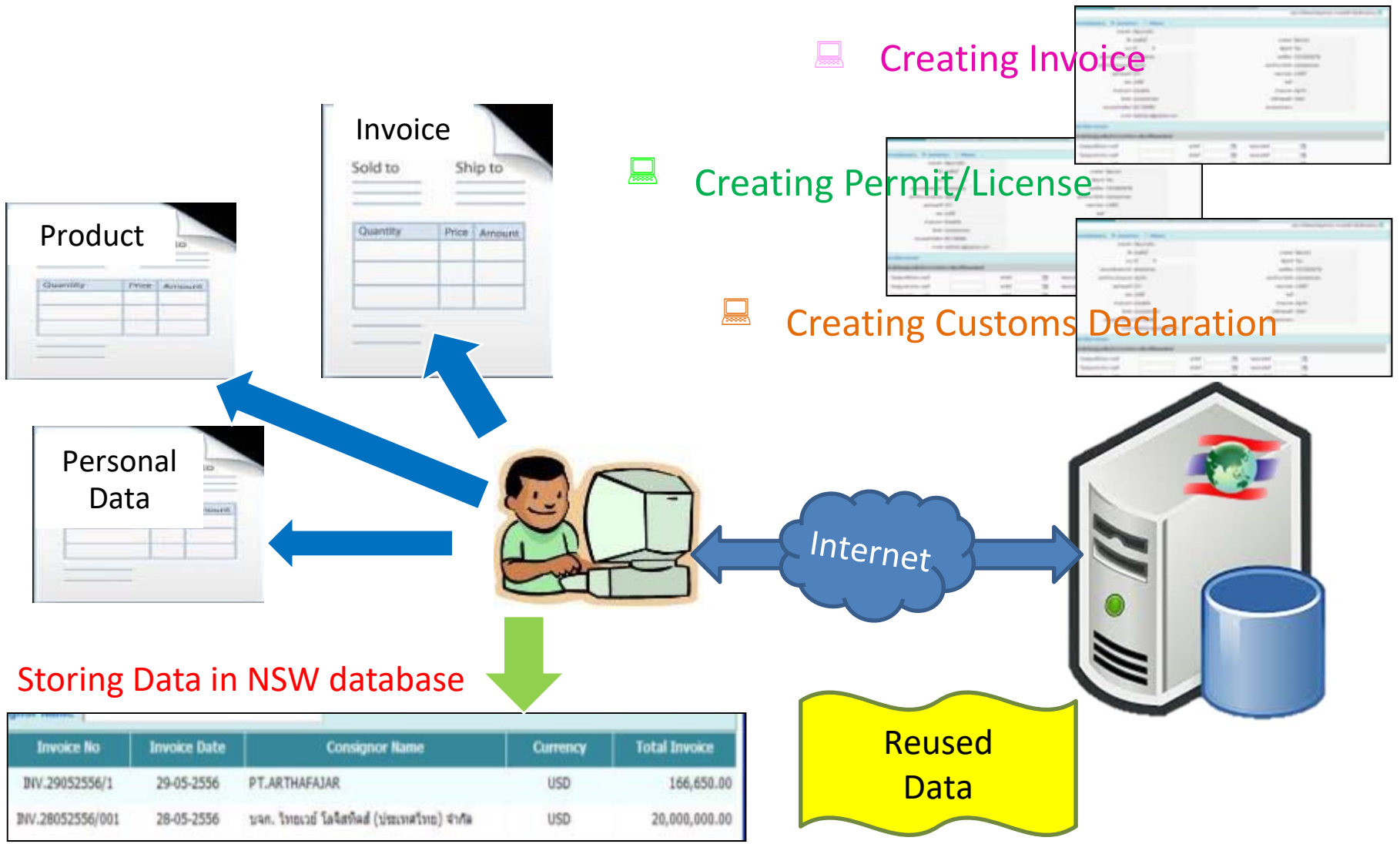


# Sample of Submission of Electronic Document Through Thailand NSW



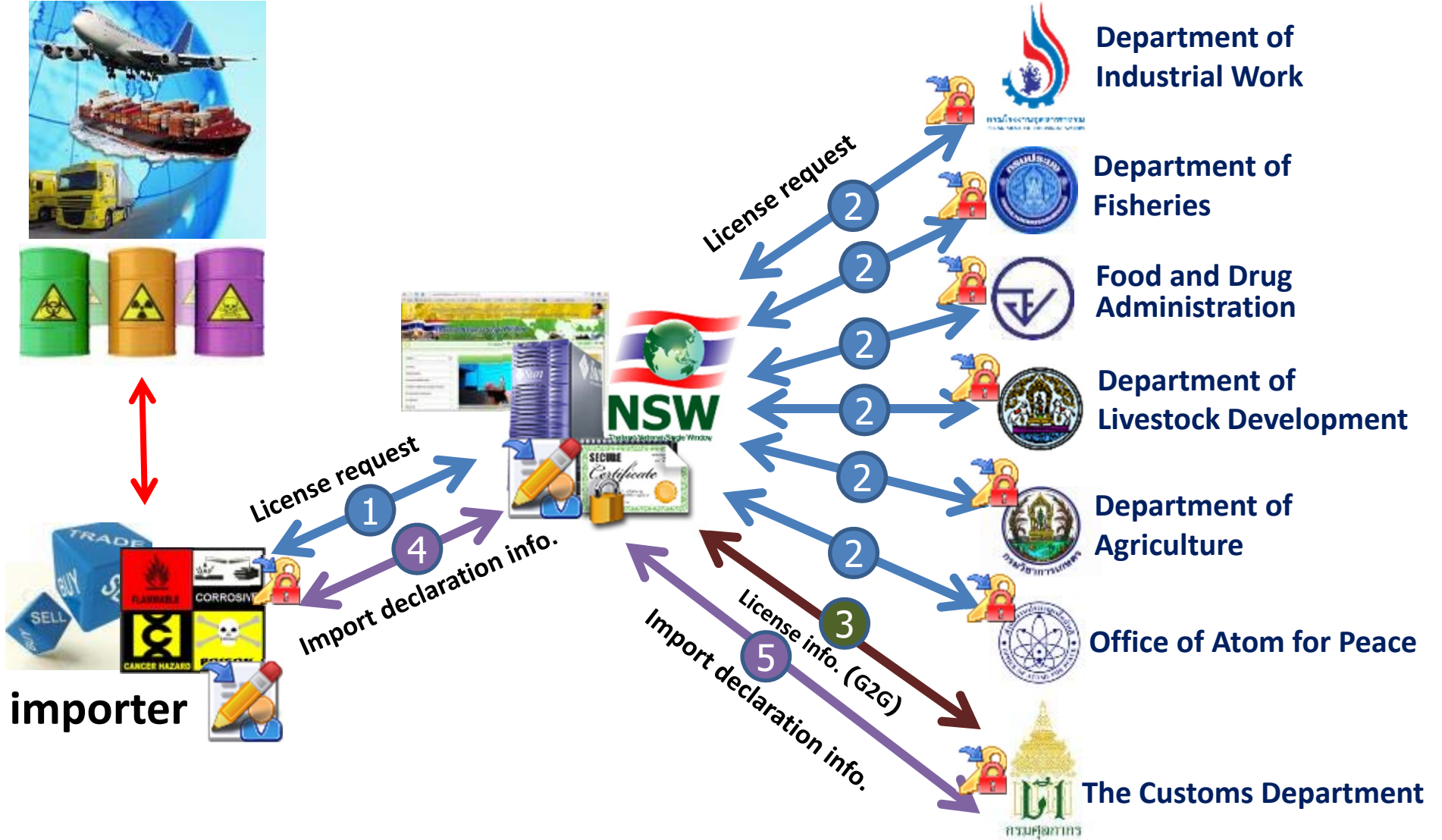


# Single Entry for Customs procedures





# Single Entry Form for restricted goods





# Customs Declaration Database for Restricted Goods Verification

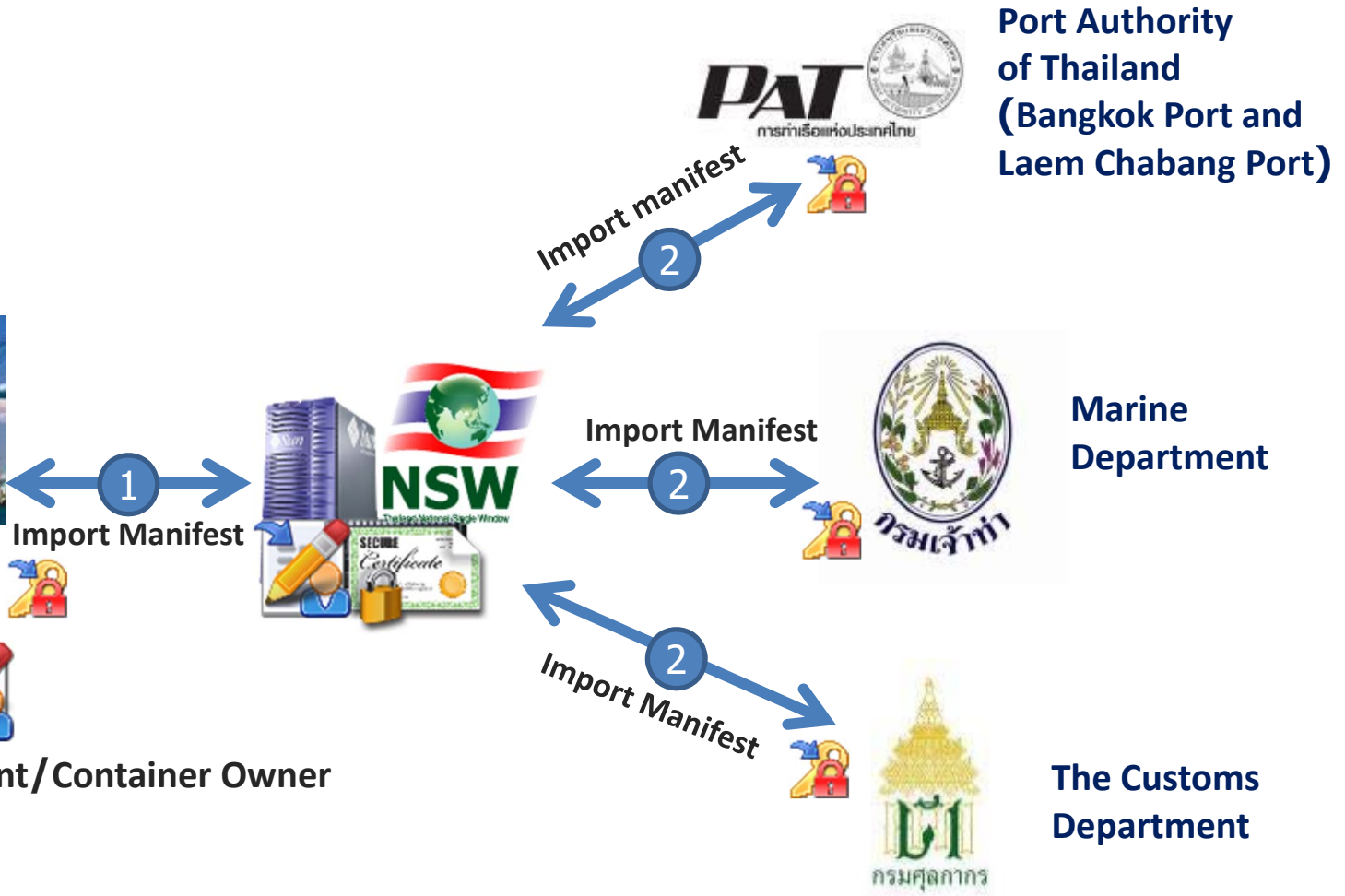




# Submit Once of Import Manifest



Ship Owner/Ship Agent/Container Owner



Port Authority of Thailand (Bangkok Port and Laem Chabang Port)



Marine Department



The Customs Department



# ASEAN Single Window





# ASEAN Single Window Commitment



❖ ***Agreement to Establish and Implement the ASEAN Single Window  
(December 9,2005)***

***ASEAN -6 (2008)***

***ASEAN -4 (2012)***

❖ ***Protocol to Establish and Implement the ASEAN Single Window  
(December 20,2006)***

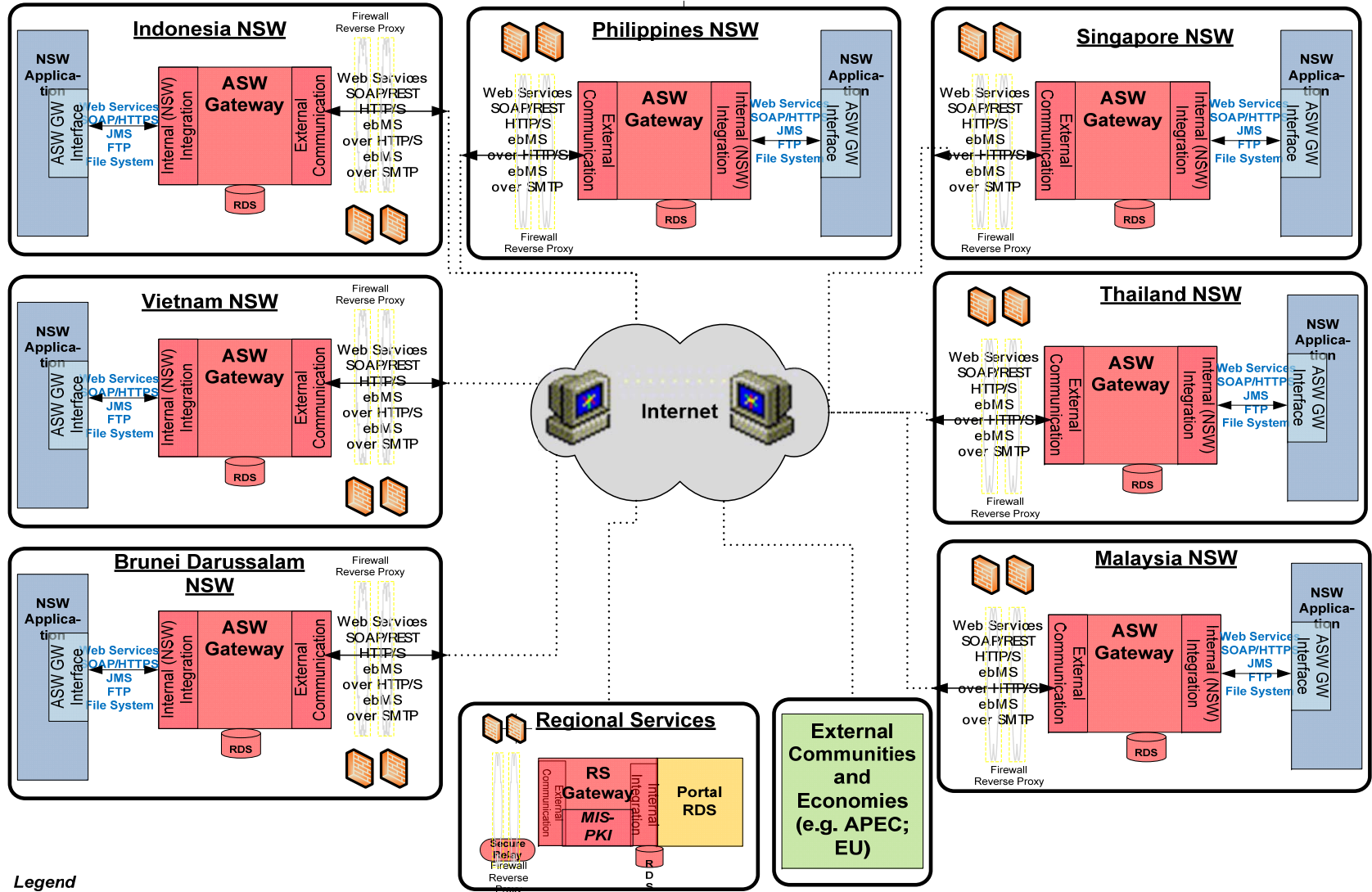
❖ ***Memorandum of Understanding on the Implementation of the ASEAN  
Single Window Pilot Project (July 18,2011)***



# ASEAN Single Window Pilot project Infrastructure

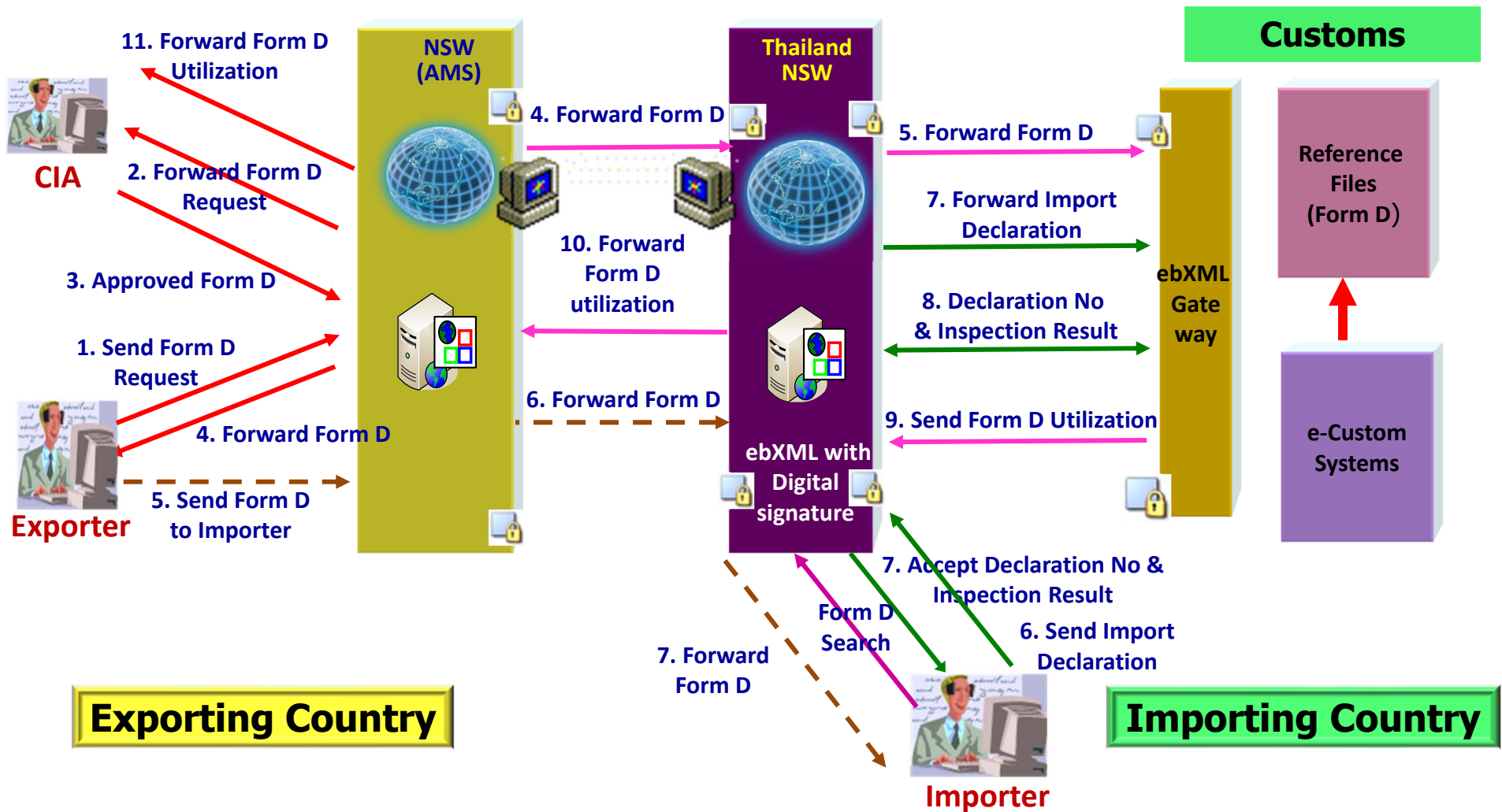


## ASW Pilot Outline Design





# ATIGA Form D

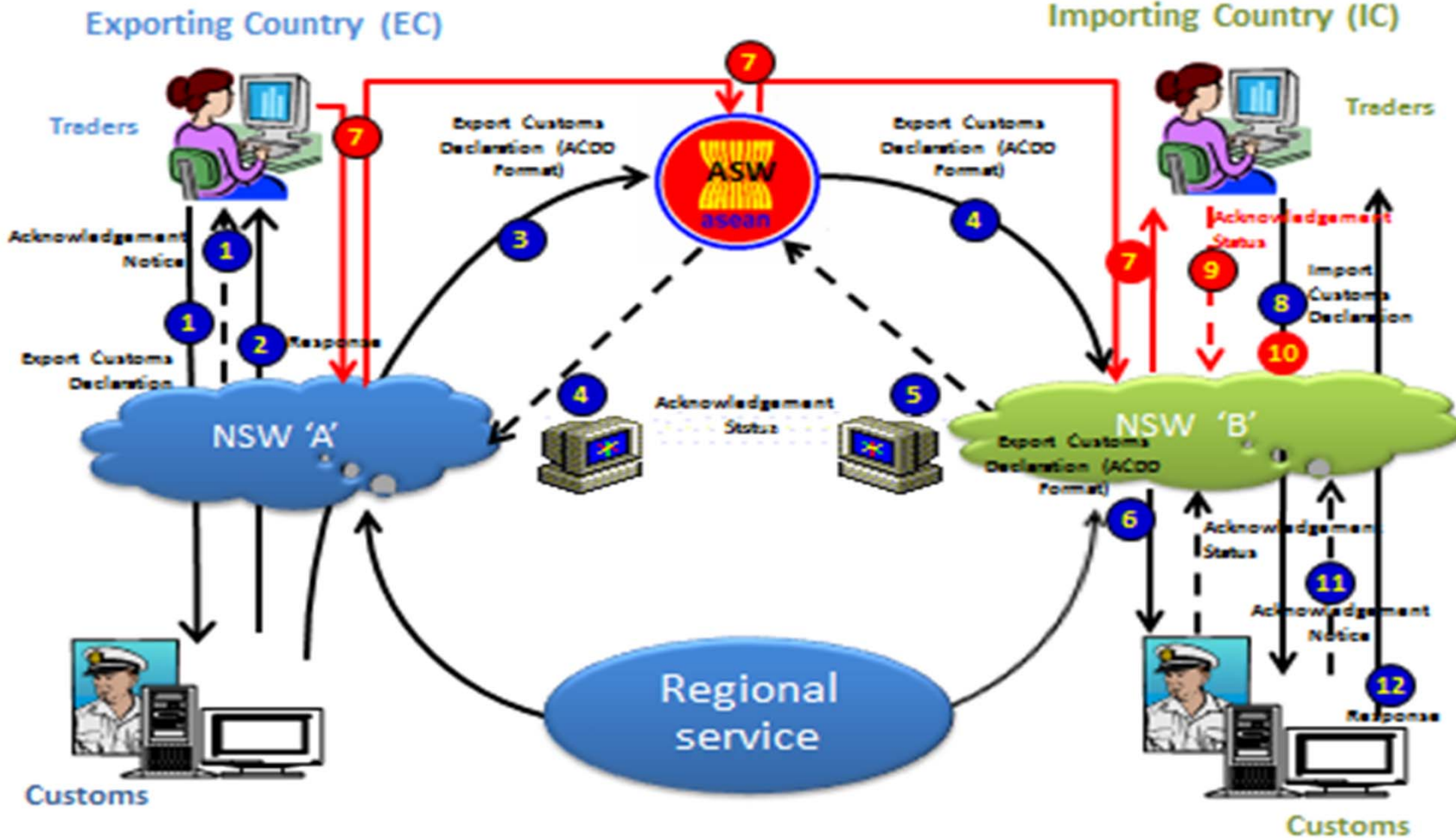




# ASEAN Customs Declaration Document (ACDD)



## Business Process for Electronic Processing of ACDD





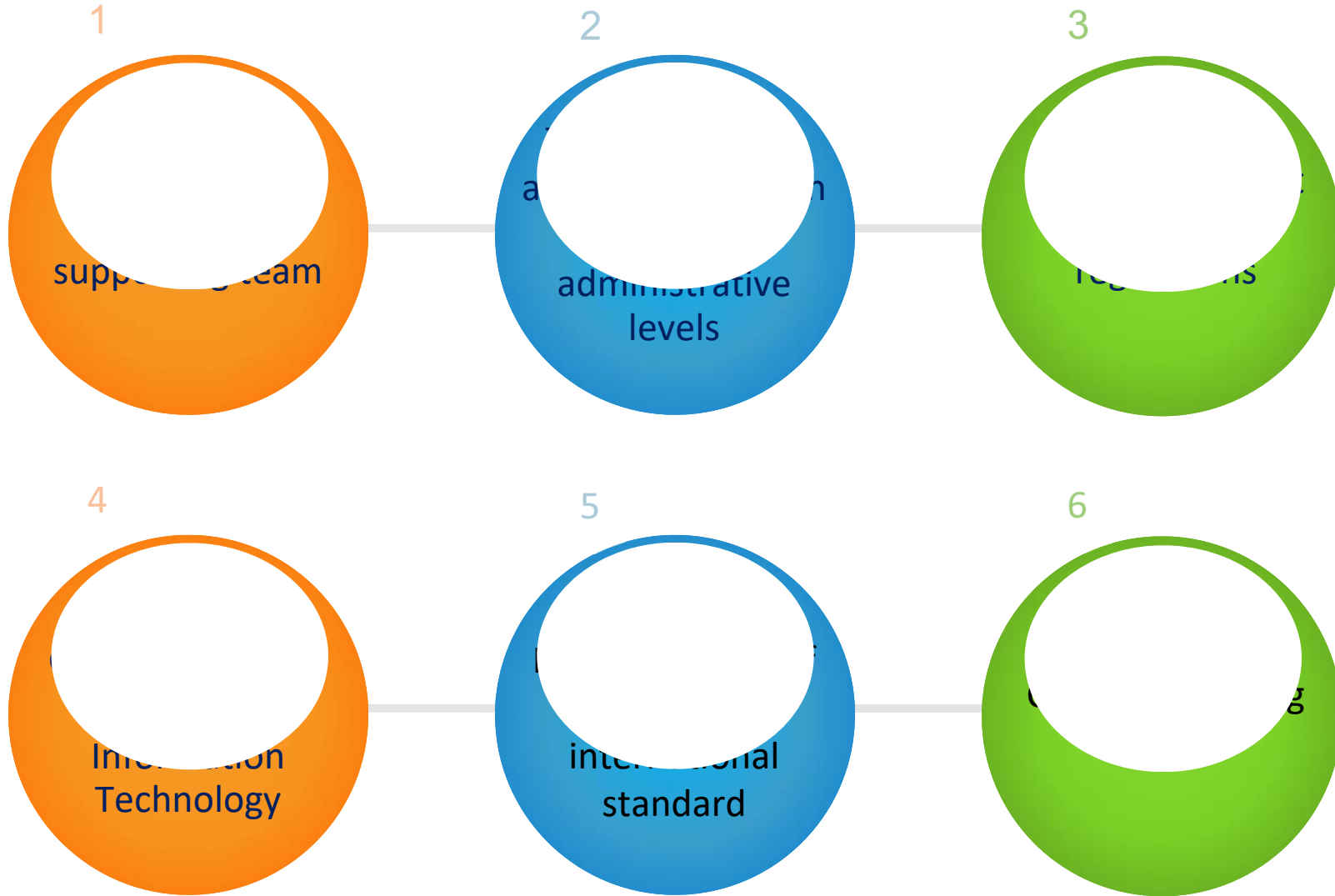
# ASEAN Single Window Staging Approach



ASW Activity (start)	2014	2015	2016
▪ Contractor Signing		■ Mar 2015	
▪ ATIGA CO Form D Test Exchange		■ Aug - Dec 2015	
▪ Financial and Technical Evaluation		■ Nov - Dec 2015	
▪ Live Exchange (with funding)			■ Jan - Dec 2016
▪ Live Exchange (AMS Pay)			From Jan 2017 →



# NSW and ASW Key Success Factors







# The Way Forward of NSW and ASW



- **Improving the quality of National Standard Data Set**
- **Increasing participation in single window environment**
- **Revising relevant laws and regulations**
- **Linking the THAILAND NSW with the NSW Systems of other ASEAN Member States**
- **Enhancing cross-border data linkage with other single window systems in other region**
- **Further simplifying and streamlining business processes**

# Thank you

[www.customs.go.th](http://www.customs.go.th)  
[www.thainsw.net](http://www.thainsw.net)



**NSW Call Center**  
**02-289-9500**  
**callcenter@thainsw.net**